

2700 - 6 Channel Cordless Falls Monitor

Included Accessories

2642 Caregiver Reset Key

Optional Accessories (Sold Separately)

2406 Plug Pack 6Vdc

2588 Wireless Waterproof Call Button with Pull Cord

2588 Personal Emergency Transmitter (PET)

2636 Easy Release Seatbelt

2719 / 2720 Cordless Pad / Mat Transmitter

(All cura¹ Cordless, Premium, Universal & Safetime Pads and Mats)

2721 iBeam

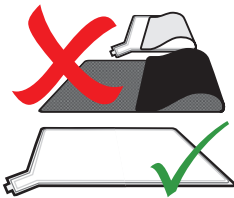
Nurse Call Cables: 2643, 2646, 2493, 2461, 2460

3501 ActiveCare Pager

3502 Wireless Handset

3503 Wireless Magnetic Reed Switch

3504 ActiveCare Bracket



Do NOT fold pads or mats when in transit or storage.

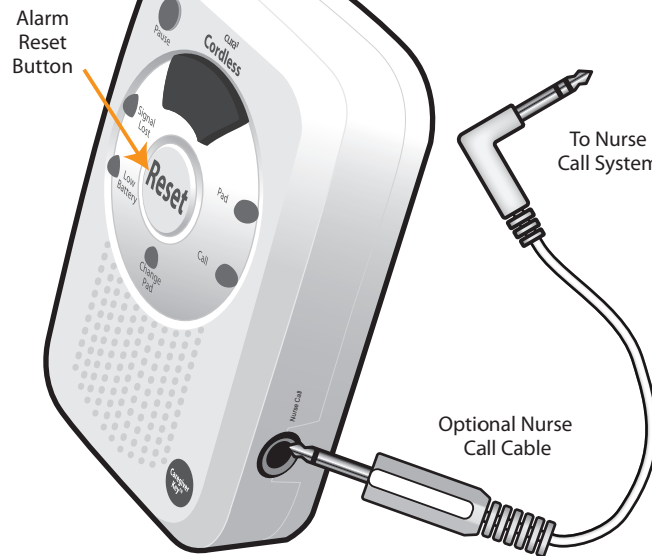
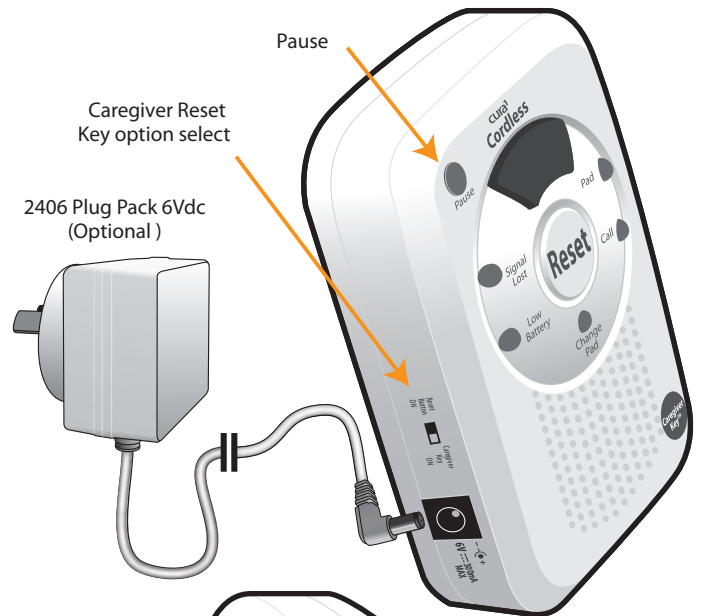
Keep pads & mats flat at all times



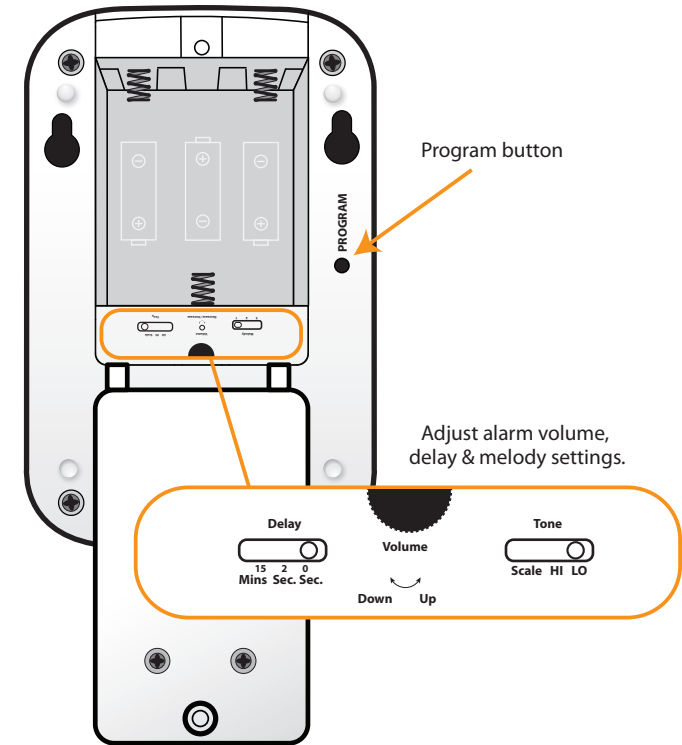
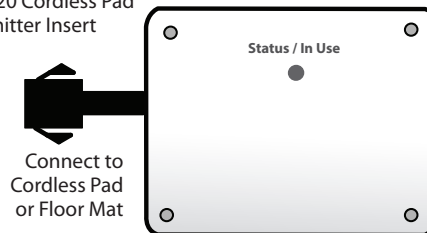
Do not immerse or wash pads or mats under running water. Use a damp cloth (1/1000 bleach solution) & wipe clean. Dry all spills on mats immediately.



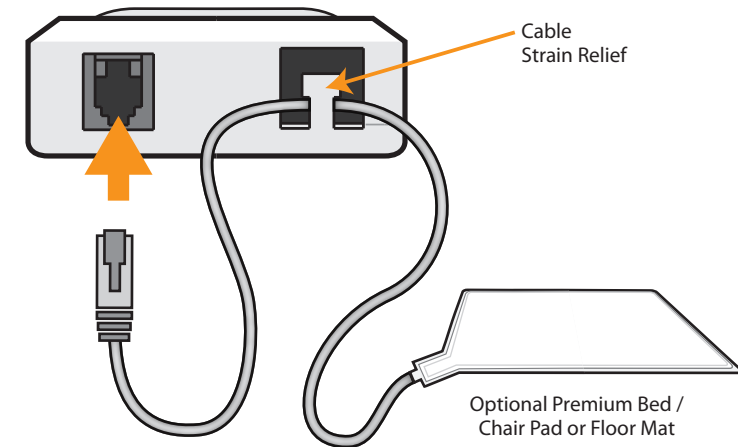
All our products are supplied with a full warranty and are guaranteed to be free from defects in material and workmanship



2719 or 2720 Cordless Pad Transmitter Insert



Bottom View

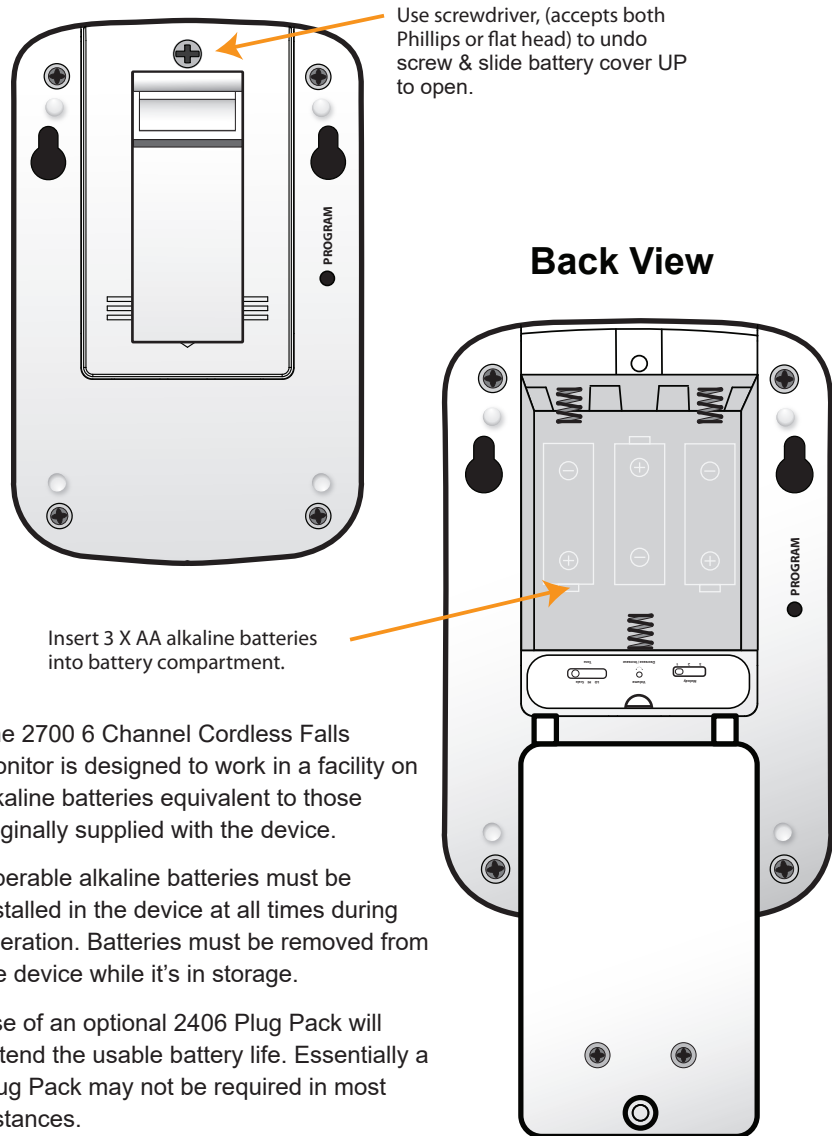


QUICK START GUIDE

2700 - 6 Channel Cordless Falls Monitor

Step 1

Insert 3 x Alkaline AA Batteries.



The 2700 6 Channel Cordless Falls Monitor is designed to work in a facility on alkaline batteries equivalent to those originally supplied with the device.

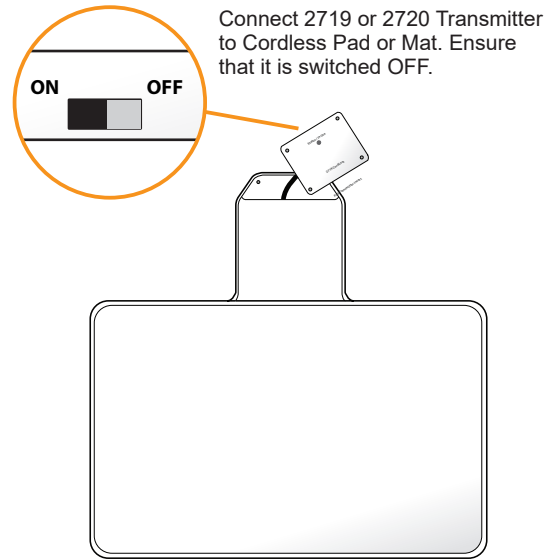
Operable alkaline batteries must be installed in the device at all times during operation. Batteries must be removed from the device while it's in storage.

Use of an optional 2406 Plug Pack will extend the usable battery life. Essentially a Plug Pack may not be required in most instances.

Test falls monitor prior to every use.

Step 2

Pair with cordless Pad/s or floor Mat.



1. Place up to six cordless pads or mats within reach. Each pad or mat must have a 2719 or 2720 Cordless Pad Transmitter Insert connected & turned OFF.
2. Press & hold the Program button on back of the Monitor until you hear 3 beeps.
3. The display will briefly display "PP" and then "01", where "0" indicates the memory slot is open and "1" is the device number from 1 to 6. Turn ON the first Pad Transmitter.
4. The Monitor will beep 3 times and the display will briefly change to "F1" where "F" indicates that memory slot "1" is now full. The display will change to the next available empty slot e.g. "02".
5. Turn ON the next device to add additional devices to the monitor.
6. To cycle through the memory slots press the Pause button. To clear a memory slot press and hold the Pause button so that the "F" changes back to a "0" The unit will beep 3 times when the slot is cleared.
7. Press the Program button or press and hold the Reset button to exit programming mode. If "t0" or "S0" is displayed, continue pressing the Reset button until the memory slots are displayed.

Step 3

Place pad on mattress or position mat on floor & test prior to using.

